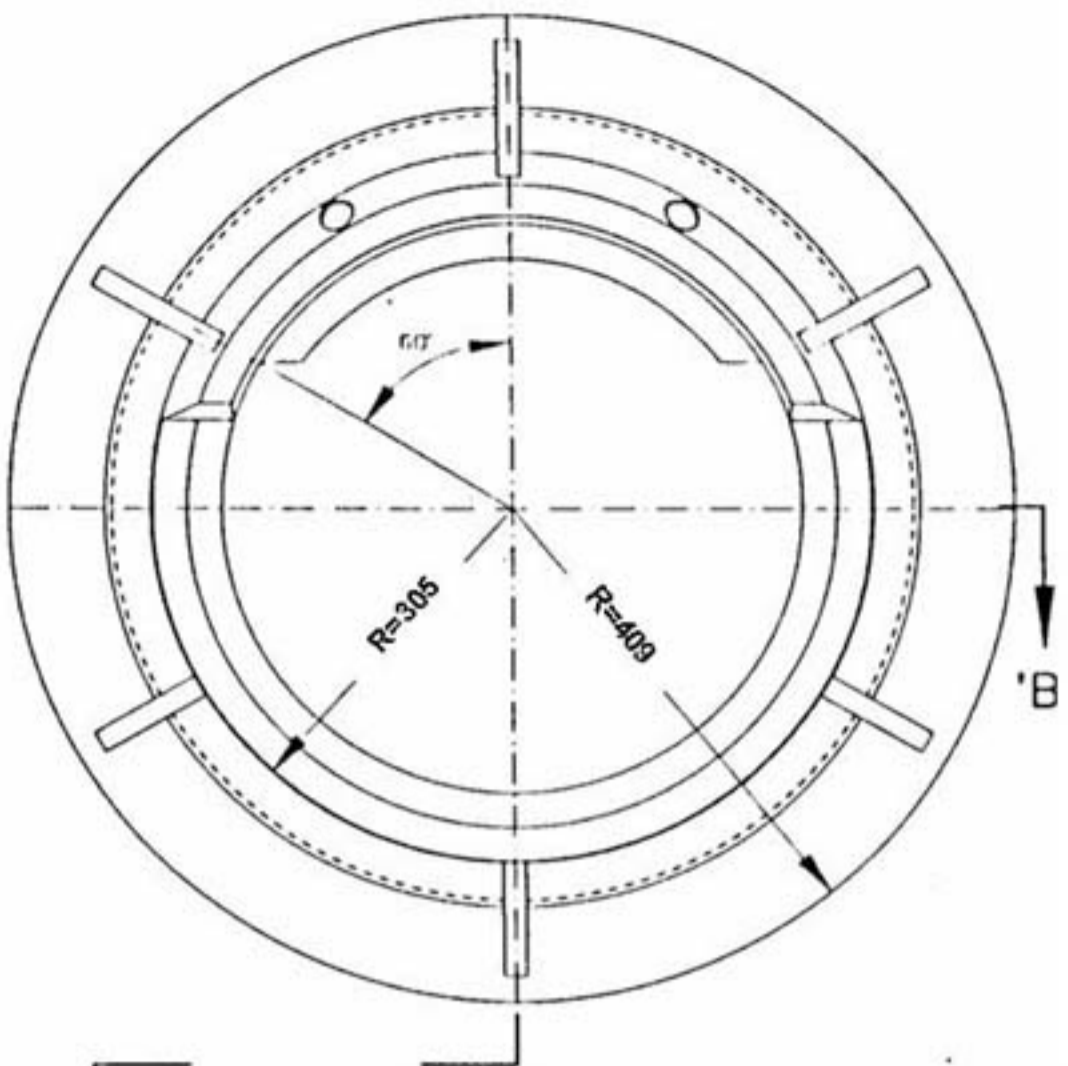
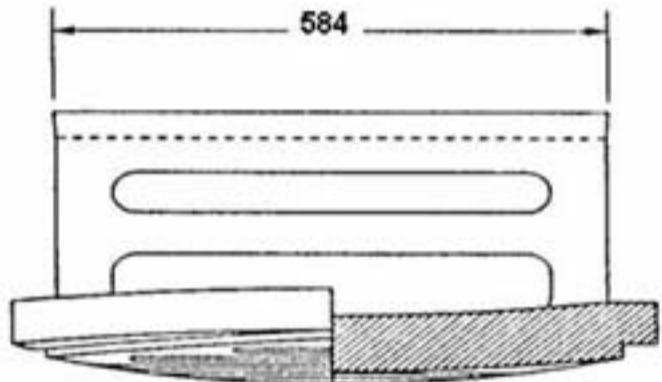


HORIZONTAL INLET AREA: 585 cm²

COVER - TOP VIEW

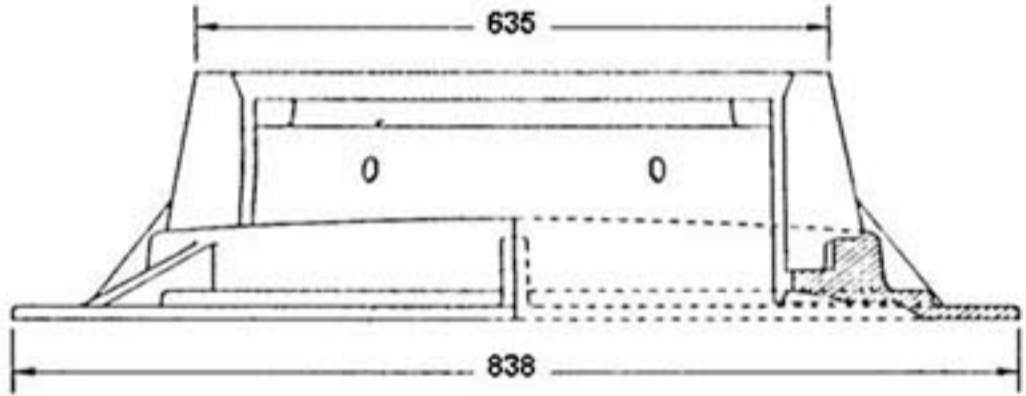


FRAME - TOP VIEW

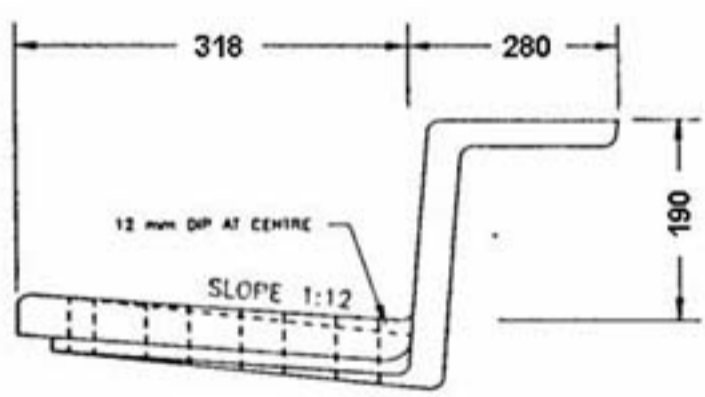


VERTICAL INLET AREA: 643 cm²

FRONT ELEVATION & SECTION 'A-A'



FRONT ELEVATION & SECTION 'B-B'



SECTION 'B-B'

SPECIFICATIONS:

THE CASTINGS SHALL BE TRUE TO PATTERN AND FREE FROM CRACKS, GAS HOLES, FLAWS AND EXCESSIVE SHRINKAGE. SURFACES OF THE CASTINGS SHALL BE FREE FROM BURNT ON SAND AND SHALL BE REASONABLY SMOOTH. RUNNERS, RISERS, FINS AND OTHER CAST ON PIECES SHALL BE REMOVED. IN OTHER RESPECT THE CASTINGS SHALL CONFORM TO WHATEVER POINTS MAY BE AGREED UPON BETWEEN THE MANUFACTURER AND THE ENGINEER. UPON REQUEST OF THE ENGINEER THE MANUFACTURER SHALL BE PREPARED TO CERTIFY THAT HIS PRODUCT CONFORMS TO THE REQUIREMENTS OF A.S.T.M. DESIGNATION A-48.



STANDARD SIDE INLET CATCH BASIN
FRAME & GRATE
FOR 190mm CURB & GUTTER

NF-36A